



SPENCER JAMES
RESIDENTIAL

8 Hartlepool Court | London E16 2RL
T: +44 (0) 20 7474 3636
E: mail@spencer-james.co.uk
www.spencer-james.co.uk



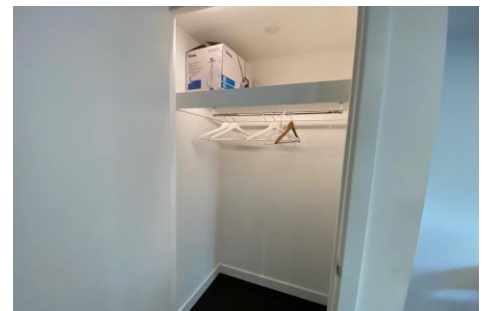
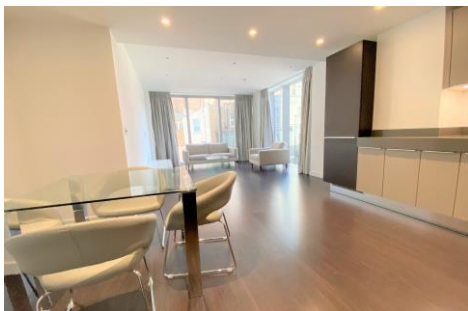
**** First Floor One Bedroom One Bath Apartment ** ** Available March ****

**** EPC Rating B ****

**** Offered Furnished ****

**** On-site Concierge/Gym/Cinema ****

**** Close To Transport Links ****



Meranti House, Alie Street, E1

Monthly Rental Of £3,100

Available to move into March is this First floor one double bedroom one bathroom apartment with balcony to rent in phase two of the luxury Goodman's Fields development. This apartment comes with access to the onsite gymnasium, swimming pool and spa, plus 24 hour concierge and private cinema room. The flat has engineered wooden flooring throughout the halls and lounge, one double bedroom, spec fully fitted open plan kitchen with dishwasher, induction cooker and wine cooler, additional WC, light and airy lounge space leading onto a balcony, modern bathroom with underfloor heating

Lounge Diner

Laminate flooring, double glazed doors giving access to balcony, sliding door to kitchen area.

Kitchen

Range of eye and base level units, laminate flooring, four ring electric hob with extractor fan over, electric oven, fridge freezer, door to utility room.

Bedroom 1

Laminate flooring, double glazed window to side and front, door to Juliette balcony, fitted wardrobes, door to en-suite.

Bathroom

Fully tiled four piece suite comprising of low level wc, wash hand basin with mixer tap over, large shower cubicle, bath with mixer tap over.

Balcony Garden

Private Balcony, Juliet Balcony From Both Bedrooms.

Double Glazing

Double Glazed Throughout



63.4 sq.m 682 sq.ft

Apartment Area	58 sq.m	624 sq.ft
Balcony/Terrace Area	5.4 sq.m	58 sq.ft
Living Room/Dining	5.01m x 3.75m	16'5" x 12'4"
Kitchen	2.73m x 2.65m	9'0" x 8'8"
Bedroom	3.79m x 3.63m	12'5" x 11'11"



